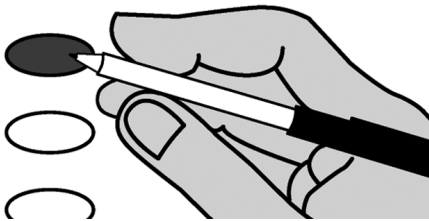


**Official Ballot  
Walla Walla County  
Primary Election  
August 6, 2024**

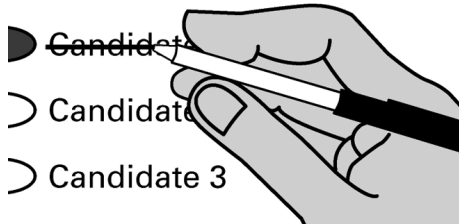
**Sample Ballot**

**How to vote**



- Use a blue or black ink pen to fill in the oval to the left of your choice.
- Vote for one in each race. If you vote for more than one, no votes will be counted.
- To vote for a candidate not listed, fill in the oval and print the candidate's name.

**If you make a mistake**



- Draw a line through the candidate's name. Then make another choice.
- If you need a replacement ballot, contact the Elections Department at (509) 524-2530.

**i Who donates to campaigns?**  
View contributors for federal candidates  
**Federal Election Commission**  
www.fec.gov  
Toll Free (800) 424-9530

**i Who donates to campaigns?**  
View contributors for candidates and measures  
**Public Disclosure Commission**  
www.pdc.wa.gov  
Toll Free (877) 601-2828

**READ: Each candidate for partisan office may state a political party that he or she prefers. A candidate's preference does not imply that the candidate is nominated or endorsed by the party, or that the party approves of or associates with that candidate.**

**Federal**  
Partisan Offices

**U.S. Senator**  
6 Year Term **Vote for One**

- Mel Ram (Prefers Republican Party)
- Dr Raul Garica (Prefers GOP Party)
- David Tilton (Prefers Non-Partisan Party)
- Maria Cantwell (Prefers Democratic Party)
- Chuck Jackson (Prefers Independent Party)
- Isaac A Holyk (Prefers Republican Party)
- Henry Clay Dennison (Prefers Socialist Workers Party)
- Scott Nazarino (Prefers Republican Party)
- Paul Lawrence Giesick (Prefers Democratic Party)
- Thor Amundson (Prefers Independent Party)
- Goodspaceguy (Prefers Republican Party)
- \_\_\_\_\_

**United States Representative**  
**Congressional District No. 5**  
2 Year Term **Vote for One**

- Rick Valentine Flynn (Prefers Republican Party)
- Rene' Holaday (Prefers Republican Party)
- Jacquelin Maycumber (Prefers Republican Party)
- Jonathan D Bingle (Prefers Republican Party)
- Carmela Conroy (Prefers Democratic Party)
- Ann Marie Danimus (Prefers Democratic Party)
- Matthew Welde (Prefers Democratic Party)
- Bernadine Bank (Prefers Democratic Party)
- Michael Baumgartner (Prefers Republican Party)
- Brian Dinsel (Prefers Republican Party)
- Bobbi Bennett-Wolcott (Prefers Democratic Party)
- \_\_\_\_\_

**State of Washington**  
Partisan Offices

**Governor**  
4 Year Term **Vote for One**

- Jim Daniel (Prefers Republican Party)
- Cassandra Magdalene Handon (Prefers Democratic Party)
- Jeff Curry (Prefers Independent Party)
- Alex Tsimerman (Prefers Standup-America Party)
- Mark Mullet (Prefers Democratic Party)
- Martin Lee Wheeler (Prefers Republican Party)
- Jennifer Hoover (Prefers Republican Party)
- Andre Stackhouse (Prefers Green Party)
- EL'ona Kearney (Prefers Democratic Party)
- Ricky Anthony (Prefers Democratic Party)
- Bob Ferguson (Prefers Democratic Party)
- Chaytan Inman (Prefers Democratic Party)
- Michael DePaula (Prefers Libertarian Party)
- Dave Reichert (Prefers Republican Party)
- Don L Rivers (Prefers Democratic Party)
- Jim Clark (States No Party Preference)
- Fred Grant (Prefers Democratic Party)
- Leon A Lawson (Prefers Trump Republican Party)
- Edward Cale IV (Prefers Democratic Party)
- Frank Dare (Prefers Independent Party)
- William Combs (Prefers Independent Party)
- Alan Makayev (Prefers Nonsense Busters Party)
- Brian Bogen (Prefers Nonpartisan Party)
- A.L. Brown (Prefers Republican Party)
- Brad Mjelde (States No Party Preference)
- Bill Hirt (Prefers Republican Party)
- Rosetta Marshall-Williams (Prefers Independence Party)
- Semi Bird (Prefers Republican Party)
- \_\_\_\_\_

**Turn Over to Continue Voting**

**Official Ballot  
Walla Walla County  
Primary Election  
August 6, 2024**

**Sample Ballot**

State of Washington Partisan Offices	State of Washington Partisan Offices	Walla Walla County Partisan Offices
<b>Lieutenant Governor</b> 4 Year Term <b>Vote for One</b> <input type="radio"/> Patrick "Pat" Harman (Prefers Liberal Republican Party) <input type="radio"/> David Griffin (Prefers Democratic Party) <input type="radio"/> Bob Hagglund (Prefers Republican Party) <input type="radio"/> Dan Matthews (Prefers Republican Party) <input type="radio"/> Denny Heck (Prefers Democratic Party) <input type="radio"/> _____	<b>Superintendent of Public Instruction</b> 4 Year Term <b>Vote for One</b> <input type="radio"/> Reid Saaris <input type="radio"/> Chris Reykdal <input type="radio"/> John Patterson Blair <input type="radio"/> David Olson <input type="radio"/> _____	<b>County Commissioner District No. 2</b> 4 Year Term <b>Vote for One</b> <input type="radio"/> Todd L. Kimball (Prefers Republican Party) <input type="radio"/> _____
<b>Secretary of State</b> 4 Year Term <b>Vote for One</b> <input type="radio"/> Marquez Tiggs (Prefers Democratic Party) <input type="radio"/> Dale Whitaker (Prefers Republican Party) <input type="radio"/> Damon Townsend (Prefers No Labels Party) <input type="radio"/> Steve Hobbs (Prefers Democratic Party) <input type="radio"/> _____	<b>Insurance Commissioner</b> 4 Year Term <b>Vote for One</b> <input type="radio"/> Patty Kuderer (Prefers Democratic Party) <input type="radio"/> Chris D. Chung (Prefers Democratic Party) <input type="radio"/> Jonathan Hendrix (States No Party Preference) <input type="radio"/> Bill Boyd (Prefers Democratic Party) <input type="radio"/> John Pestinger (Prefers Democratic Party) <input type="radio"/> Tim Verzal (States No Party Preference) <input type="radio"/> Phil Fortunato (Prefers Republican Party) <input type="radio"/> Justin Murta (Prefers Republican Party) <input type="radio"/> _____	<b>Washington State Supreme Court</b> Nonpartisan Offices <b>Justice Position 2</b> 6 Year Term <b>Vote for One</b> <input type="radio"/> Todd A. Bloom <input type="radio"/> Sal Mungia <input type="radio"/> David R Shelvey <input type="radio"/> Dave Larson <input type="radio"/> _____
<b>State Treasurer</b> 4 Year Term <b>Vote for One</b> <input type="radio"/> Mike Pellicciotti (Prefers Democratic Party) <input type="radio"/> Sharon Hanek (Prefers Republican Party) <input type="radio"/> _____	<b>State Legislative District No. 16</b> Partisan Offices <b>State Senator</b> 4 Year Term <b>Vote for One</b> <input type="radio"/> Perry Dozier (Prefers Republican Party) <input type="radio"/> Kari Isaacson (Prefers Democratic Party) <input type="radio"/> _____	<b>Fire Protection District No. 4</b>  <b>PROPOSITION 1</b>  WALLA WALLA COUNTY FIRE PROTECTION DISTRICT NO. 4  PROPERTY TAX LEVY FOR FIRE PROTECTION AND EMERGENCY MEDICAL SERVICES  The Board of Walla Walla County Fire Protection District No. 4 adopted Resolution No. 2024-03 concerning a proposition to maintain and adequately fund District operations.  This proposition would authorize the District to establish its 2024 property tax levy at \$1.26 per \$1,00.00 of assessed valuation (collected in 2025) and authorizes annual adjustments for the five succeeding years based on the greater of one percent of the 12-month West Region CPI-U reported in June of each levy year, subject to statutory limits. The maximum allowable levy in 2029 (collected in 2023 shall serve at the base for subsequent levy limitations.
<b>State Auditor</b> 4 Year Term <b>Vote for One</b> <input type="radio"/> Matt Hawkins (Prefers Republican Party) <input type="radio"/> Pat (Patrice) McCarthy (Prefers Democratic Party) <input type="radio"/> _____	<b>State Representative Position 1</b> 2 Year Term <b>Vote for One</b> <input type="radio"/> Mark Klicker (Prefers Republican Party) <input type="radio"/> Linda Gunshefski (Prefers Democratic Party) <input type="radio"/> _____	Should this proposition be:  <input type="radio"/> Approved <input type="radio"/> Rejected
<b>Attorney General</b> 4 Year Term <b>Vote for One</b> <input type="radio"/> Pete Serrano (Prefers Republican Party) <input type="radio"/> Nick Brown (Prefers Democratic Party) <input type="radio"/> Manka Dhingra (Prefers Democratic Party) <input type="radio"/> _____	<b>State Representative Position 2</b> 2 Year Term <b>Vote for One</b> <input type="radio"/> Skyler Rude (Prefers Republican Party) <input type="radio"/> Craig R Woodard (Prefers Democratic Party) <input type="radio"/> _____	
<b>Commissioner of Public Lands</b> 4 Year Term <b>Vote for One</b> <input type="radio"/> Allen Lebovitz (Prefers Democratic Party) <input type="radio"/> Jaime Herrera Beutler (Prefers Republican Party) <input type="radio"/> Dave Upthegrove (Prefers Democratic Party) <input type="radio"/> Sue Kuehl Pederson (Prefers Republican Party) <input type="radio"/> Patrick DePoe (Prefers Democratic Party) <input type="radio"/> Jeralee Anderson (Prefers Democratic Party) <input type="radio"/> Kevin Van De Wege (Prefers Democratic Party) <input type="radio"/> _____	<b>Walla Walla County</b> Partisan Offices <b>County Commissioner District No. 1</b> 4 Year Term <b>Vote for One</b> <input type="radio"/> Bertha Clayton (States No Party Preference) <input type="radio"/> Jenny Mayberry (Prefers Republican Party) <input type="radio"/> _____	<b>Vote Both Sides</b>

**Official Ballot  
Walla Walla County  
Primary Election  
August 6, 2024**

**Sample Ballot**

<p><b>Fire Protection District No. 5</b></p>	<p><b>Precinct Committee Officer</b> Partisan Office</p>	<p><b>Precinct Committee Officer</b> Partisan Office</p>
<p><b>PROPOSITION 1</b></p> <p>WALLA WALLA COUNTY FIRE PROTECTION DISTRICT NO. 5</p> <p>AUTHORIZATION FOR A SINGLE YEAR PERMANENT LEVY LID LIFT</p> <p>Walla Walla County Fire Protection District No. 5 Commissioners adopted Resolution No. 2024-1 concerning funding for fire protection and emergency medical services.</p> <p>This proposition would authorize an increase of the District's property tax levy rate to \$1.38 per \$1,000 assessed valuation for 2025 collection to fund District fire protection and emergency medical services operations, including maintenance, staffing, training, capital facilities, and equipment. The dollar amount of the levy collected in 2025 shall be used to calculate the levy limit in subsequent years.</p> <p>Should the proposition be:</p> <p><input type="radio"/> Approved</p> <p><input type="radio"/> Rejected</p>	<p><b>For this office only:</b> In order to vote for Precinct Committee Officer, a partisan office, you must affirm that you are a Democrat or a Republican and may vote only for one candidate from the party you select. Your vote for a candidate affirms your affiliation with the same party as the candidate. This preference is private and will not be matched to your name or shared.</p> <p><b>Precinct Committee Officer</b> <b>Birch 5</b> 2 Year Term                      Vote for One</p> <p><input type="radio"/> Woody Simmons - Dem I affirm I am a Democrat.</p> <p><input type="radio"/> Kathryn Ann Donlin - Dem I affirm I am a Democrat.</p>	<p><b>For this office only:</b> In order to vote for Precinct Committee Officer, a partisan office, you must affirm that you are a Democrat or a Republican and may vote only for one candidate from the party you select. Your vote for a candidate affirms your affiliation with the same party as the candidate. This preference is private and will not be matched to your name or shared.</p> <p><b>Precinct Committee Officer</b> <b>Watertown 29</b> 2 Year Term                      Vote for One</p> <p><input type="radio"/> Shane Laib - Rep I affirm I am a Republican.</p> <p><input type="radio"/> Daniel E Wooton - Rep I affirm I am a Republican.</p>
<p><b>Precinct Committee Officer</b> Partisan Office</p>	<p><b>For this office only:</b> In order to vote for Precinct Committee Officer, a partisan office, you must affirm that you are a Democrat or a Republican and may vote only for one candidate from the party you select. Your vote for a candidate affirms your affiliation with the same party as the candidate. This preference is private and will not be matched to your name or shared.</p> <p><b>Precinct Committee Officer</b> <b>Edison 08</b> 2 Year Term                      Vote for One</p> <p><input type="radio"/> David A. Schmaltz - Dem I affirm I am a Democrat.</p> <p><input type="radio"/> Amy Schwab - Dem I affirm I am a Democrat.</p>	<p><b>For this office only:</b> In order to vote for Precinct Committee Officer, a partisan office, you must affirm that you are a Democrat or a Republican and may vote only for one candidate from the party you select. Your vote for a candidate affirms your affiliation with the same party as the candidate. This preference is private and will not be matched to your name or shared.</p> <p><b>Precinct Committee Officer</b> <b>Frenchtown 44</b> 2 Year Term                      Vote for One</p> <p><input type="radio"/> Darren Z. Goble - Rep I affirm I am a Republican.</p> <p><input type="radio"/> Kathleen Small - Rep I affirm I am a Republican.</p>
<p><b>For this office only:</b> In order to vote for Precinct Committee Officer, a partisan office, you must affirm that you are a Democrat or a Republican and may vote only for one candidate from the party you select. Your vote for a candidate affirms your affiliation with the same party as the candidate. This preference is private and will not be matched to your name or shared.</p> <p><b>Precinct Committee Officer</b> <b>Alder 2</b> 2 Year Term                      Vote for One</p> <p><input type="radio"/> Susan Smiley Nakonieczny - Rep I affirm I am a Republican.</p> <p><input type="radio"/> Donald Grenseman - Rep I affirm I am a Republican.</p>	<p><b>For this office only:</b> In order to vote for Precinct Committee Officer, a partisan office, you must affirm that you are a Democrat or a Republican and may vote only for one candidate from the party you select. Your vote for a candidate affirms your affiliation with the same party as the candidate. This preference is private and will not be matched to your name or shared.</p> <p><b>Precinct Committee Officer</b> <b>Jefferson 13</b> 2 Year Term                      Vote for One</p> <p><input type="radio"/> Beth Brotherton Swanson - Rep I affirm I am a Republican.</p> <p><input type="radio"/> Roy Elia - Rep I affirm I am a Republican.</p>	<p><b>For this office only:</b> In order to vote for Precinct Committee Officer, a partisan office, you must affirm that you are a Democrat or a Republican and may vote only for one candidate from the party you select. Your vote for a candidate affirms your affiliation with the same party as the candidate. This preference is private and will not be matched to your name or shared.</p> <p><b>Precinct Committee Officer</b> <b>Waitsburg 65</b> 2 Year Term                      Vote for One</p> <p><input type="radio"/> Jim Romine - Rep I affirm I am a Republican.</p> <p><input type="radio"/> Charles Nosler - Rep I affirm I am a Republican.</p>