

Primary Election Sample Ballot - August 7, 2018 - Walla Walla County, WA

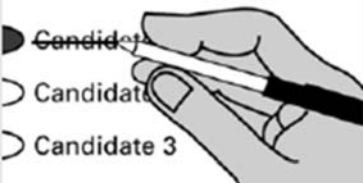
Your official ballot will contain *only* the races for which you are eligible to vote.

How to vote



- Use a blue or black ink pen to fill in the oval to the left of your choice.
- Vote for one in each race. If you vote for more than one, no votes will be counted.
- To vote for a candidate not listed, fill in the oval and print the candidate's name.

If you make a mistake



- Draw a line through the measure response or candidate's name. Then make another choice.
- If you need a replacement ballot, contact the Elections Department at (509) 524-2530.

Federal Partisan Offices

U.S. Senator 6 Year Term

Vote For One

- | | |
|--|-----------------------------------|
| <input type="radio"/> Thor Amundson | (Prefers Independent Party) |
| <input type="radio"/> Dave Strider | (Prefers Independent Party) |
| <input type="radio"/> Joey Gibson | (Prefers Republican Party) |
| <input type="radio"/> Mike Luke | (Prefers Libertarian Party) |
| <input type="radio"/> GoodSpaceGuy | (Prefers Republican Party) |
| <input type="radio"/> Clint R. Tannehill | (Prefers Democratic Party) |
| <input type="radio"/> Maria Cantwell | (Prefers Democratic Party) |
| <input type="radio"/> Susan Hutchison | (Prefers Republican Party) |
| <input type="radio"/> Brad Chase | (Prefers FDFR Party) |
| <input type="radio"/> Tim Owen | (Prefers Republican Party) |
| <input type="radio"/> Matthew D. Heines | (Prefers Republican Party) |
| <input type="radio"/> Sam Wright | (Prefers The Human Rights Party) |
| <input type="radio"/> Art Coday | (Prefers Republican Party) |
| <input type="radio"/> John Orlinski | (Prefers Republican Party) |
| <input type="radio"/> Charlie R Jackson | (Prefers Independent Party) |
| <input type="radio"/> Keith Swank | (Prefers Republican Party) |
| <input type="radio"/> Alex Tsimerman | (Prefers StandupAmerica Party) |
| <input type="radio"/> RC Smith | (Prefers Republican Party) |
| <input type="radio"/> Don L. Rivers | (Prefers Democratic Party) |
| <input type="radio"/> Jennifer Gigi Ferguson | (Prefers Independent Party) |
| <input type="radio"/> Steve Hoffman | (Prefers Freedom Socialist Party) |
| <input type="radio"/> George H. Kalberer | (Prefers Democratic Party) |
| <input type="radio"/> James Robert "Jimmie" Deal | (Prefers Green Party) |
| <input type="radio"/> Roque "Rocky" De La Fuente | (Prefers Republican Party) |
| <input type="radio"/> Jon Butler | (Prefers Independent Party) |
| <input type="radio"/> Dave Bryant | (Prefers Republican Party) |
| <input type="radio"/> Mohammad Said | (Prefers Democratic Party) |
| <input type="radio"/> Matt Hawkins | (Prefers Republican Party) |
| <input type="radio"/> Glen R Stockwell | (Prefers Republican Party) |
| <input type="radio"/> _____ | |

U.S. Representative Congressional District No. 4 2 Year Term

Vote For One

- | | |
|---------------------------------------|----------------------------|
| <input type="radio"/> Dan Newhouse | (Prefers Republican Party) |
| <input type="radio"/> Christine Brown | (Prefers Democratic Party) |
| <input type="radio"/> _____ | |

U.S. Representative Congressional District No. 5 2 Year Term

Vote For One

- | | |
|---|--------------------------------|
| <input type="radio"/> Cathy McMorris Rogers | (Prefers Republican Party) |
| <input type="radio"/> Dave Saulibio | (Prefers Trump Populist Party) |
| <input type="radio"/> Jered Gavin Bonneau | (Prefers Republican Party) |
| <input type="radio"/> Lisa Brown | (Prefers Democratic Party) |
| <input type="radio"/> Kari Olavi Ilonummi | (Prefers Republican Party) |
| <input type="radio"/> _____ | |

State Legislative Partisan Office

State Representative Position 1 Legislative District No. 16 2 Year Term

Vote For One

- | | |
|---|----------------------------|
| <input type="radio"/> Everett Maroon | (Prefers Democratic Party) |
| <input type="radio"/> William "Bill" Jenkin | (Prefers Republican Party) |
| <input type="radio"/> _____ | |

State Legislative Partisan Office	
State Representative Position 2 Legislative District No. 16 2 Year Term	Vote For One
<input type="radio"/> Dan Mildon (Prefers Republican Party)	
<input type="radio"/> Rebecca Francik (Prefers Democratic Party)	
<input type="radio"/> Skyler Rude (Prefers Republican Party)	
<input type="radio"/> _____	
Walla Walla County Partisan Offices	
County Assessor 4 Year Term	Vote For One
<input type="radio"/> Debra Antes (Prefers Republican Party)	
<input type="radio"/> _____	
County Auditor 4 Year Term	Vote For One
<input type="radio"/> Karen Martin (Prefers Republican Party)	
<input type="radio"/> _____	
County Clerk 4 Year Term	Vote For One
<input type="radio"/> Kathy Martin (Prefers Republican Party)	
<input type="radio"/> _____	
County Commissioner District No. 3 4 Year Term	Vote For One
<input type="radio"/> Jim Duncan (Prefers Republican Party)	
<input type="radio"/> _____	
County Coroner 4 Year Term	Vote For One
<input type="radio"/> Richard Greenwood (Prefers Republican Party)	
<input type="radio"/> _____	
County Prosecuting Attorney 4 Year Term	Vote For One
<input type="radio"/> James L. Nagle (Prefers Republican Party)	
<input type="radio"/> _____	
County Sheriff 4 Year Term	Vote For One
<input type="radio"/> Matthew J Stroe (Prefers Republican Party)	
<input type="radio"/> Mark Crider (Prefers Republican Party)	
<input type="radio"/> Tom Cooper (Prefers Republican Party)	
<input type="radio"/> _____	
County Treasurer 4 Year Term	Vote For One
<input type="radio"/> Gordon R. Heimbigner (Prefers Republican Party)	
<input type="radio"/> _____	

Precinct Committee Officer Partisan Office	
For this office only: in order to vote for precinct committee officer, a partisan office, you must affirm that you are a Democrat or Republican and may vote only for one candidate from the party you select. Your vote for a candidate affirms your affiliation with the same party as the candidate. This preference is private and will not be matched to your name or shared.	
Precinct Committee Officer Edison Precinct 2 Year Term	Vote For One
<input type="radio"/> John W. Piatt - REP	I affirm I am a Republican
<input type="radio"/> Marilyn Washabaugh - REP	I affirm I am a Republican
Precinct Committee Officer College Place 1 Precinct 2 Year Term	
Vote For One	
<input type="radio"/> Joanna Cowles Cleveland - DEM	I affirm I am a Democrat
<input type="radio"/> Robert J. Shewmake - DEM	I affirm I am a Democrat

Sample ballot compiled by:
Karen Martin, County Auditor