

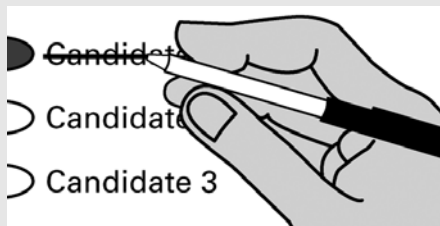
Sample Ballot
Walla Walla County
Special Election
February 12, 2019

How to vote



- Use a blue or black ink pen to fill in the oval to the left of your choice.
- Vote for one in each race. If you vote for more than one, no votes will be counted.

If you make a mistake



- Draw a line through the measure response or candidate's name. Then make another choice.
- If you need a replacement ballot, contact the Elections Department at (509) 524-2530.

Touchet School District No. 300

Proposition 1
Replacement of Expiring Educational Programs and Operations Levy

The Board of Directors of Touchet School District No. 300 adopted Resolution No. 02-2018-2019, concerning a proposition to finance educational programs and operations expenses. This proposition would authorize the District to levy the following excess taxes, to replace an expiring levy, on all taxable property within the District, for support of educational programs and operations expenses not funded by the State:

Collection Year	Estimated Levy Rate/\$1,000 Assessed Value	
	Assessed Value	Levy Amount
2020	\$1.50	\$734,966
2021	\$1.50	\$734,966
2022	\$1.50	\$734,966

all as provided in Resolution No. 02-2018-2019 and subject to legal limits on levy rates and amounts at the time of levy. Should this proposition be approved?

- Levy Yes
- Levy No

3 ways to return your ballot:

1. Ballot Drop Box

Drop boxes are open 24 hours a day and until 8:00 p.m. on Election Day.

- **Touchet School District**
90 Champion St.
(entrance to parking lot)
- **Courthouse Alley**
Between Courthouse and Jail
(enter on 5th)
- **Elections Center**
310 W. Poplar St.
(corner of 5th & Poplar)

2. In Person

- **Elections Center**
310 W. Poplar St., Room 102
Elections Center is open 9:00 a.m. to 4:00 p.m. weekdays and until 8:00 p.m on Election Day.
- **Auditor's Office**
315 W. Main St., Room 201
Auditor's Office is open 9:00 a.m. to 4:00 p.m. weekdays.

3. By Mail

Postage is not required - ballots must be postmarked by Election Day.

Election Day is February 12th

Walla Walla County Elections
 509-524-2530
 elections@co.walla-walla.wa.us
 vote.wa.gov/wallawalla

Who donates to campaigns?
 View contributors for candidates and measures

Public Disclosure Commission
 www.pdc.wa.gov
 Toll Free (877) 601-2828

Sample Ballot